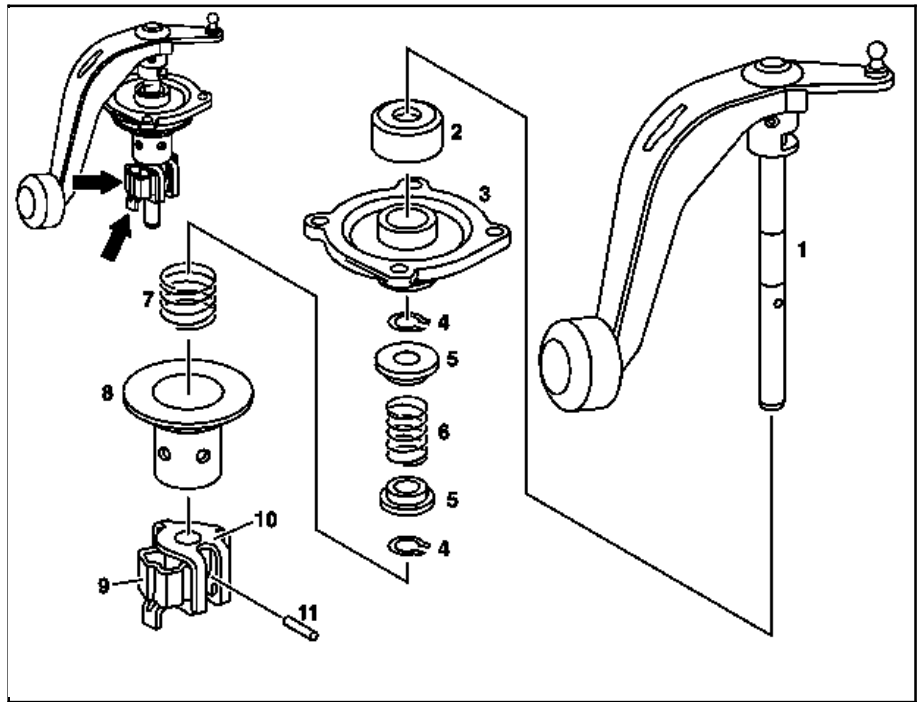
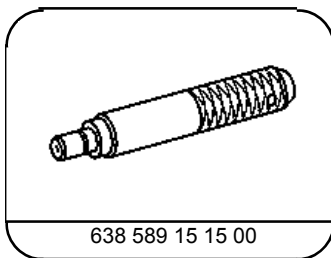


- 1 Gear selector shaft (with gear selector lever)
- 2 Dust guard
- 3 Cover
- 4 Safety ring
- 5 Guide rail
- 6 Spring
- 7 Spring
- 8 Guide sleeve
- 9 Shift finger
- 10 Shift lock
- 11 Elastic pin



S26.60-3011-06

☒ ☒	Removing		
1	Remove the gear selector group		AR26.60-S-6500A
☒ ☒	Disassembling, assembling		
2	Knock out the elastic pin (11)	⚠ Install: Replace the elastic pin	
3	Take out the shift finger (9), the shift lock (10), the guide sleeve (8) and the spring (7).	ⓘ Install: The back (arrow) of the shift finger (9) and the longest lug (arrow) of the shift lock (10) must point towards the counterweight of the shift lever	
4	Remove the safety ring (4)	⚠ During removal and installation, pay attention not to overtighten the safety ring (4)	
5	Take out the guide washers (5) and the spring (6)		
6	Remove the safety ring (4) and take out the cover (3)	⚠ During removal and installation, pay attention not to overtighten the safety ring (4)	
7	Remove the radial retainer of the cover (3)	⚠ Install: Replace the radial retainer	AR26.60-S-6520A
8	Remove the upper bearing of the gear selector group	☑ Impact drift	AR26.60-S-6510-01A *638589151500
9	Install in reverse order		



638 589 15 15 00

Drift punch